

**Sani-T**®

**METRICON**  
Digital Systems



**Sani-T®** is an innovative way to improve store operations as well as the shopping experience and most importantly ensure the health and safety of customers and employees

## GENERAL

**Sani-T®** is a device that succeeds in reducing the total viral and microbial load that is present in every supermarket trolley, spraying with a special disinfectant liquid the entire surface of each trolley.

**Sani-T®** utilises innovative technology, and as a fully automated device, it is equipped with an integrated state-of-the-art, “smart” sensor & spraying system.

**Sani-T®** cleans several trolleys at a time and sanitizes the entire trolley - not just the handles and high-touch areas - quickly and consistently.

The device eliminates also the need for store employees to manually clean each cart throughout the day. Since the coronavirus outbreak, all stores have regularly cleaned carts throughout the day, as well as provided cleaning wipes at trolley pickup areas.

Employing a low-pressure spray system and a special disinfectant, **Sani-T®** has an adequate footprint, enabling it to be placed wherever shopping carts are returned and staged for customer use. The device can use any commercially approved disinfectant the user prefers.

**Sani-T®** is shipped in an easy-to-assemble format that requires minimum time from opening the packaging to fully operational mode.



## DEVICE PARTS

Sani-T® consists of the following parts:

1. The lightweight aluminum chassis
2. The spraying system
3. The sensor system
4. The electronic controller (equipped with a lock)
5. The sanitizer compartment (equipped with a lock) with the integrated weighing system

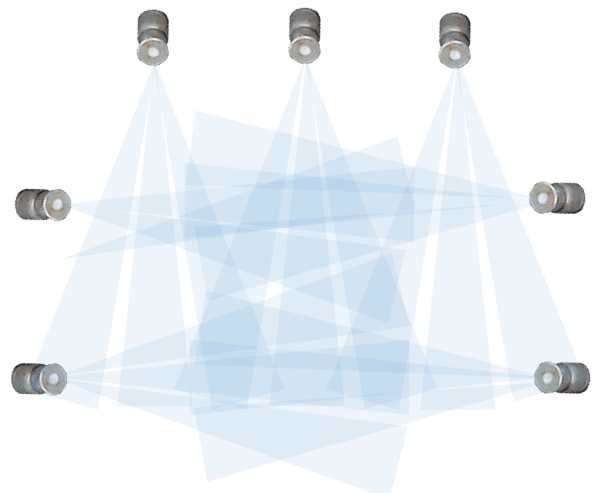
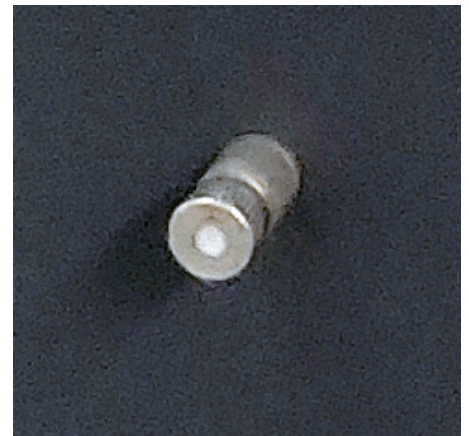
### 1. Chassis

The chassis is completely made of lightweight aluminum enabling the device to be easily moved around to different places if the user wishes to. Its structure is adequately strong, and the user can utilize the “free-surfaces” of the chassis to apply promotional messages, wrap it with colour stickers, company logos etc.

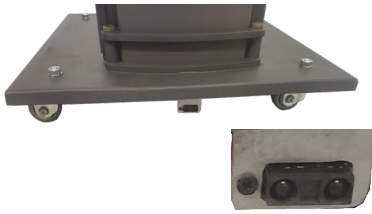


### 2. Spraying System

The Spraying System consists of seven (7) spraying nozzles in total (3 on the bottom of the horizontal side and 2 on the inside part of each vertical pillar). The Spraying System has also a special probe and a silent micro-pump. The probe as well as the micro-pump are placed inside the Sanitiser Compartment where the canister with the disinfectant liquid is. The micro-pump ensures that adequate disinfectant is fed to the spraying nozzles with the assistance of the micro-probe. When the level of sanitizer liquid is low, the micro-probe is able to sense this and automatically sends an alert signal to the Electronic Controller Unit and the green light indicator is constantly flashing, an indication to the user that the sanitizer canister needs to be replaced or refilled. The Spraying System is connected and controlled by the Electronic Controller Unit.







### 3. Sensor System

The Sensor System consists of a “smart” movement sensor located on the bottom of the pillar on which the Electronic Controller Unit and the Sanitiser Compartment are affixed. The “smart” sensor is connected and controlled also by the Electronic Controller Unit.

### 4. Electronic Controller Unit

The Electronic Controller Unit is the “heart and mind” of the device. It consists of an electronic board, equipped with state-of-the-art electronic components and driven by a powerful microprocessor. The Electronic Controller Unit integrates all interconnected sub-systems i.e. the Spraying System, the Sensor System and the Weighing device of the Sanitiser Compartment. The Electronic Controller Unit compartment has the Mode of Operation switch affixed to it and it is equipped with a security lock for security and safety reasons and in order to prevent any fraudulent activities.

### 5. Sanitiser Compartment with Integrated Weighing System

The Sanitiser Compartment is also made of lightweight aluminum, and has a robust design. It is adequately large to facilitate a large sanitizer canister. In order to constantly monitor the level of the sanitizer liquid, the bottom of the Sanitiser Compartment is equipped with three (3) micro load cells. The micro load cells monitor the weight of the canister and when this reaches a low, an alert signal is sent to the Electronic Controller Unit which instantly changes the status of the device light indicator from “green” to “flashing green”. The Sanitiser Compartment is also equipped with a security lock for security and safety reasons and in order to prevent any fraudulent activities.



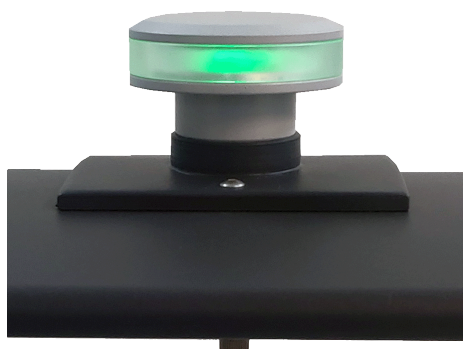


## MODES OF OPERATION

Sani-T<sup>®</sup> operates in two (2) different modes, manually selected by the user via the Mode Selection Switch:

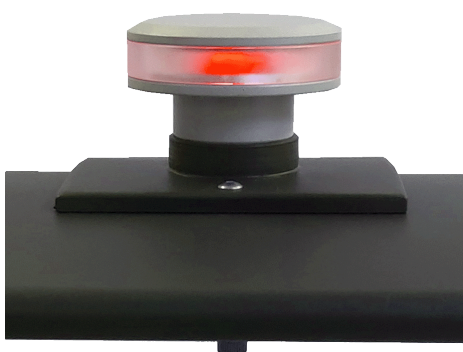
The user turns the Mode Selection Switch to “ON” and the light on top of the device turns “GREEN”, an indication that the device is “ON POWER”

The user has to select between two (2) Modes of Operation, namely:



### Mode 1 (Auto-Sensing Spraying):

The “GREEN” indicator light is constantly “ON”. The shopping trolley is passed through the device. Automatically, the light indicator turns to “RED” as the sensor system detects the object (trolley). Simultaneously, the electronic controller engages the spraying system and the trolley is sprayed with adequate quantity of disinfectant.



### Mode 2 (Continuous Spraying):

The “RED” indicator light is constantly “ON” and the spraying system is on uninterrupted operation, spraying disinfectant continuously until the user turns the Mode of Operation switch to either Mode 1 (Auto-Sensing Spraying) or to “OFF”, switching the device completely.